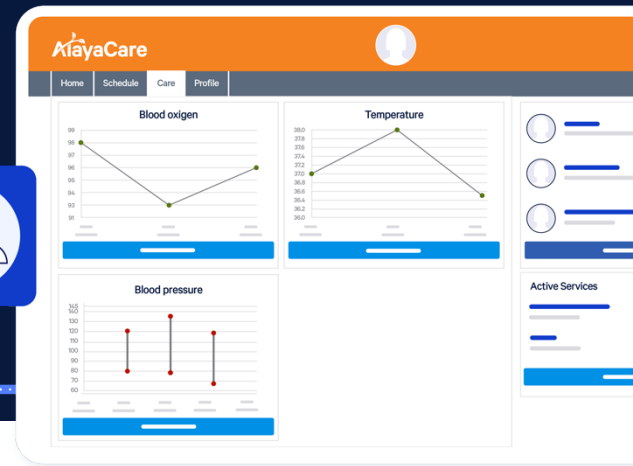




Family Portal

Stay connected to client care
with our interactive Family Portal



We are dedicated to supporting the needs of our clients and their families and understand how stressful it can be to manage your own care or the care of a loved one.

At [Agency Name], we want to alleviate some of your worries by providing you with real-time transparency into client care plans and updates through our online Family Portal.

With the Family Portal, you can quickly view information and collaborate on the individualized care services that our team provides for your loved one.



How does it work?

If you're already set up with the [Agency Name] you can visit [Add link here] to log in.

Once you accept an emailed invitation providing you with access to the online Family Portal, you will be asked to set your password. After you set your password, you will be automatically logged into the Family Portal and will be able to access and collaborate on information including, but not limited to:

- Details and Profiles of Client Care Teams
- Visit Schedules and client activities
- Request, Cancel or Adjust Visit Dates and Times
- Request New Services
- View Care Information
- Complete Forms
- View Documents
- View and Pay Invoices
- Secure Messaging



Visit the family portal:
www.urlname.com/familyportal

Family Portal

Keep your loved one's profile details up to date

- ✓ Phone Number
- ✓ Allergies
- ✓ Address
- ✓ Invoice History

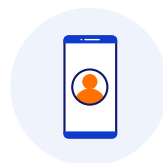


Manage and stay up to date on care schedules

- ✓ See daily, weekly, or monthly calendar views
- ✓ Review the date, time, and caregiver for upcoming or completed visits
- ✓ Request a new visit or series of visits

View live care status updates on each [Agency Name] visit

- ✓ Review the profiles of your care team
- ✓ View or complete necessary forms
- ✓ View your loved one's previous or most recent vitals recorded
- ✓ View the list of your loved one's medications and past administration schedule



Download the Family Portal App



Family Portal is a Premium Feature. Reach out to sales@alayacare.com or your Customer Relationship Manager for inquiries about Family Portal pricing.

* Customers are required to be on Care Plan and Forms 2.0 to use Family Portal.

Book a Demo to see the Family Portal in action.



Get in touch with us today to learn more.

alayacare.com | sales@alayacare.com